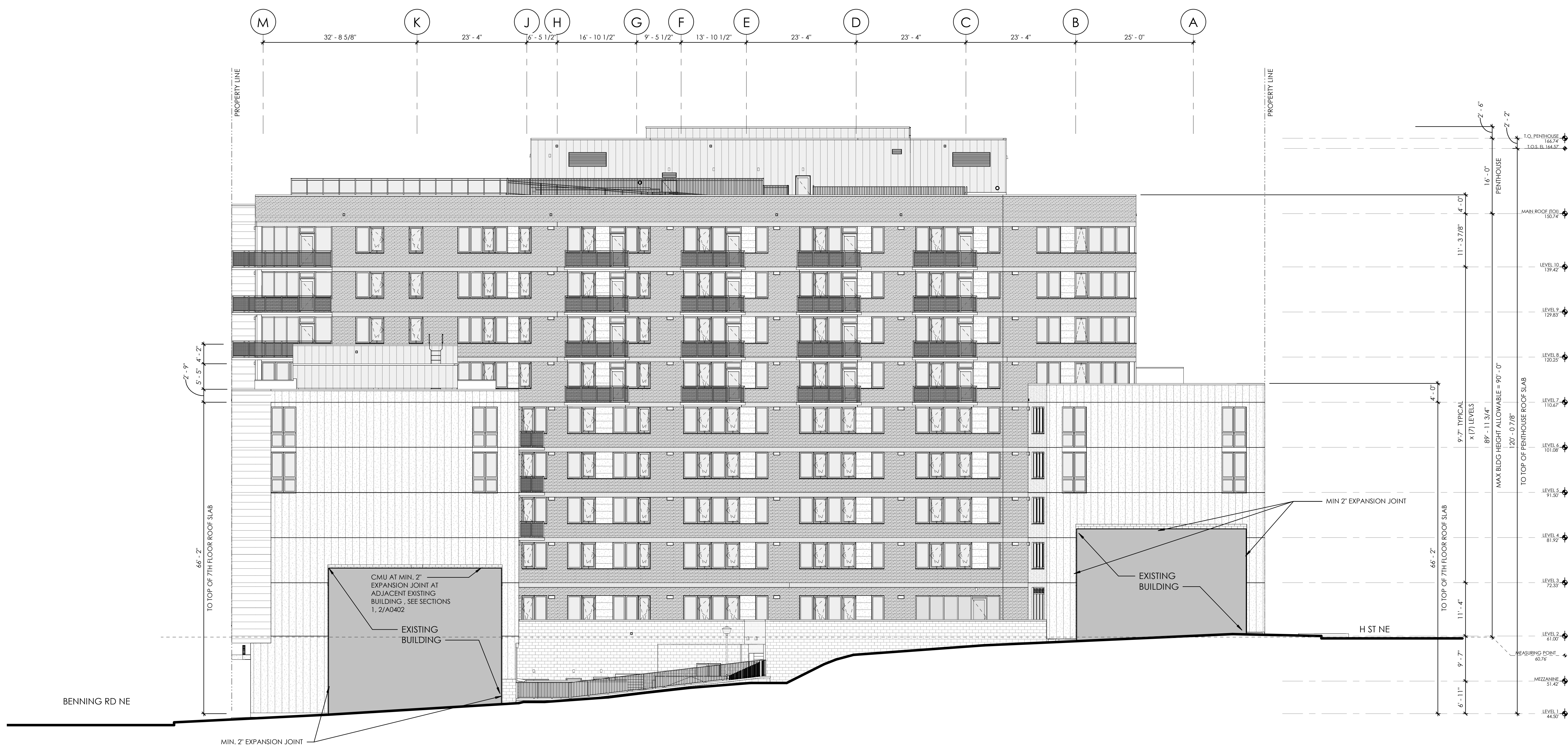


EAST ELEVATION - PUD DESIGN



EAST ELEVATION - PROPOSED DESIGN

WDG

WDG ARCHITECTURE, PLLC
1025 CONNECTICUT AVENUE NW
SUITE 300
WASHINGTON DC, 20036
TEL 202 857 8300
FAX 202 463 2198
E-MAIL wdg@wdgarch.com

ELLINWOOD + MACHADO

3000 WILLSON BOULEVARD
SUITE 350
ARLINGTON, VA 22201
TEL (703)835 - 9989
FAX
E-MAIL fgillard@emstructural.com

EDG2 ENGINEERING DESIGN
GROUP
10411 MOTOR CITY DRIVE
SUITE 550
BETHESDA, MD 20817
TEL (202) 466 - 2222
FAX (202) 466 - 2232
E-MAIL craig.johnson@edg2.com

WDG INTERIORS

1025 CONNECTICUT AVE NW
SUITE 300
WASHINGTON DC 20036
TEL (202) 857 - 8300
FAX (202) 463 - 2198
E-MAIL wdg@wdgarch.com

LSG LANDSCAPE

ARCHITECTURE
1775 GREENSBORO STATION
PLACE, SUITE 110
TYSONS, VA 22102
TEL (703) 821 - 2045
FAX (703) 448 - 0597
E-MAIL info@lsginc.com

1701 H STREET DEVELOPMENT
1701 H STREET NE
WASHINGTON DC

GRUBB PROPERTIES
4601 PARK ROAD SUITE 450
CHARLOTTE, NC 28229

FOREFRONT COMPANY
8229 BOONE BLVD, SUITE 400
VIENNA, VA 22182

PROFESSIONAL SEAL

WDG PROJECT NO: WA19024

BUILDING
ELEVATIONS

SCALE: 3/32" = 1'-0"

SK05

